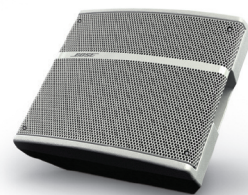


Panaray® 310M Multi-Position Floor Array



Compact. Added flexibility.
Bose® performance.

Compact and versatile. The Bose® Panaray® 310M multi-position floor array gives you flexible placement options with an unobtrusive design, making it well-suited for installations where performance and aesthetics are priorities. It features one 5.25" (133mm) driver in a multi-position cabinet with three 2.25" (57mm) drivers in a proprietary Articulated Array® loudspeaker design. This innovative combination of cabinet shape and unique Bose technology allows the Panaray 310M multi-position floor array to be used in three different positions for almost any type of floor array application:

- > Individual mix
- > Group mix – deep stage
- > Group mix – shallow stage

Using exclusive Bose driver technology, the Panaray 310M multi-position floor array is an effective solution for new or existing systems in houses of worship, auditoriums, performing arts facilities and municipal multipurpose spaces. It is designed for small- to medium-sized stage applications such as:

- > School performances
- > Orchestra pits
- > Live music events

The features you need for the performance you want.

- > Compact and lightweight, with a durable, sleek design.
- > Proprietary Articulated Array loudspeaker design, in combination with a multi-position cabinet, allows the Panaray 310M multi-position floor array to deliver the proper mix to onstage performers.
- > Bass extension to 70 Hz to meet the demands of most array applications.
- > Recessed rear NL4 connectors aid cable concealment.
- > Integrated rubber cabinet boot helps reduce unwanted array movement.
- > Backed by a transferable five-year limited warranty.

Bose Professional Systems Division

Design | Performance | Support

BOSE®

Specifications

Driver complement:

One 5.25" (133mm) driver
Three 2.25" (57mm) drivers

**Maximum acoustic output
(ground plane measurements):**

111 dB-SPL @ 1m
117 dB-SPL (peak) @ 1m

Impedance:

8Ω

Long-term power handling:

100W

Sensitivity (pink noise):

91 dB-SPL, 1W @ 1m

Frequency range (±3 dB):

70 Hz to 16 kHz

Beamwidth:

45° Individual position: 60° horizontal, 120° vertical
60° Group – far position: 120° horizontal, 60° vertical
40° Group – near position: 120° horizontal, 60° vertical

Connectors:

2 x NL4 connectors

Color:

Black or white

Dimensions:

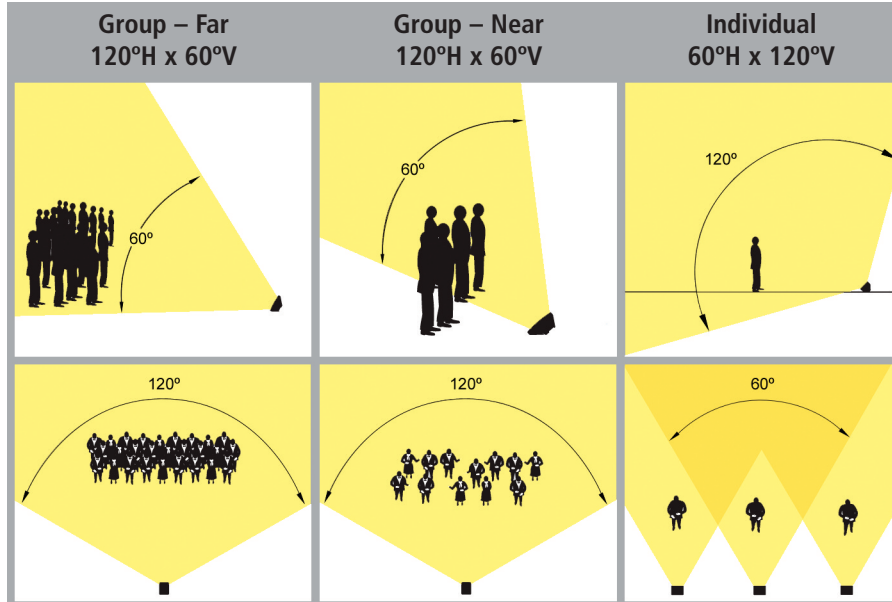
8.3"D x 12.5"W x 14.2"H
(211mm x 318mm x 361mm)

Weight:

Product: 14lb (6kg)
Shipping: 20lb (9kg)

Innovative 3-in-1 design

Delivers different coverage patterns for different applications.



Use for large groups on a deep stage: school chorus, stage play or choir.

Use for small groups on a shallow stage: musical duo or quartet, small choir or stage production.

Use for individual mixes or stationary performers.

For more information:

pro.bose.com

BOSE
Better sound through research®

All information subject to change without notice.

©2007 Bose Corporation.

Bose, Panaray and Articulated Array are registered trademarks of Bose Corporation.

CCM-004517 PC044298